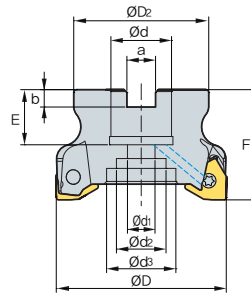
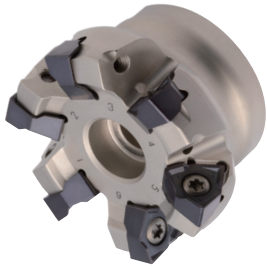


RM6PCM-WN04 new



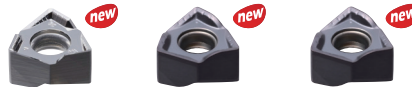
AA 90°
 • AR: -6°
 • RR: -14°~ -11°

(mm)

Designation		ØD	ØD2	Ød	Ød1	Ød2	Ød3	a	b	E	F	ap	
RM6PCM 040R-16-6-WN04	6	40	35	16	9	14	-	8.4	5.6	19	40	4.3	0.19
040R-16-7-WN04	7	40	35	16	9	14	-	8.4	5.6	19	40	4.3	0.19
050R-22-8-WN04	8	50	42	22	11	18	-	10.4	6.3	20	40	4.3	0.28
050R-22-9-WN04	9	50	42	22	11	18	-	10.4	6.3	20	40	4.3	0.28
063R-22-10-WN04	10	63	49	22	11	18	-	10.4	6.3	20	40	4.3	0.47
063R-22-11-WN04	11	63	49	22	11	18	-	10.4	6.3	20	40	4.3	0.47

Available inserts

WNGX-MA WNGX-ML WNGX-MM



Designation	Cermet		Coated											Uncoated			page		
	CN2000	CN30	NCM325	NC5330	NCM535	NCM545	PC2505	PC2010	PC3600	PC3700	PC6510	PC9530	PC9540	PC5300	PC5400	ST30A		G10	H01
WNGX 040304PNFR-MA																			●
040308PNFR-MA																			●
040312PNFR-MA																			●
040316PNFR-MA																			●
040304PNER-ML								●		●				●	●				
040308PNER-ML								●						●	●				
040312PNER-ML														●					
040316PNER-ML														●					
040304PNSR-MM								●		●				●	●				
040308PNSR-MM								●						●	●				
040312PNSR-MM														●					
040316PNSR-MM														●					

Available arbors

Designation	NC arbors
RM6PCM 040R-16-6-WN04	BT□□-FMC16-□□
040R-16-7-WN04	
050R-22-8-WN04	
050R-22-9-WN04	BT□□-FMC22-□□
063R-22-10-WN04	
063R-22-11-WN04	

Parts

Specification		
Ø40~Ø63	Screw ETNA02506	Wrench TW07S

Available inserts E28 Available arbors and bolt E400~E402

